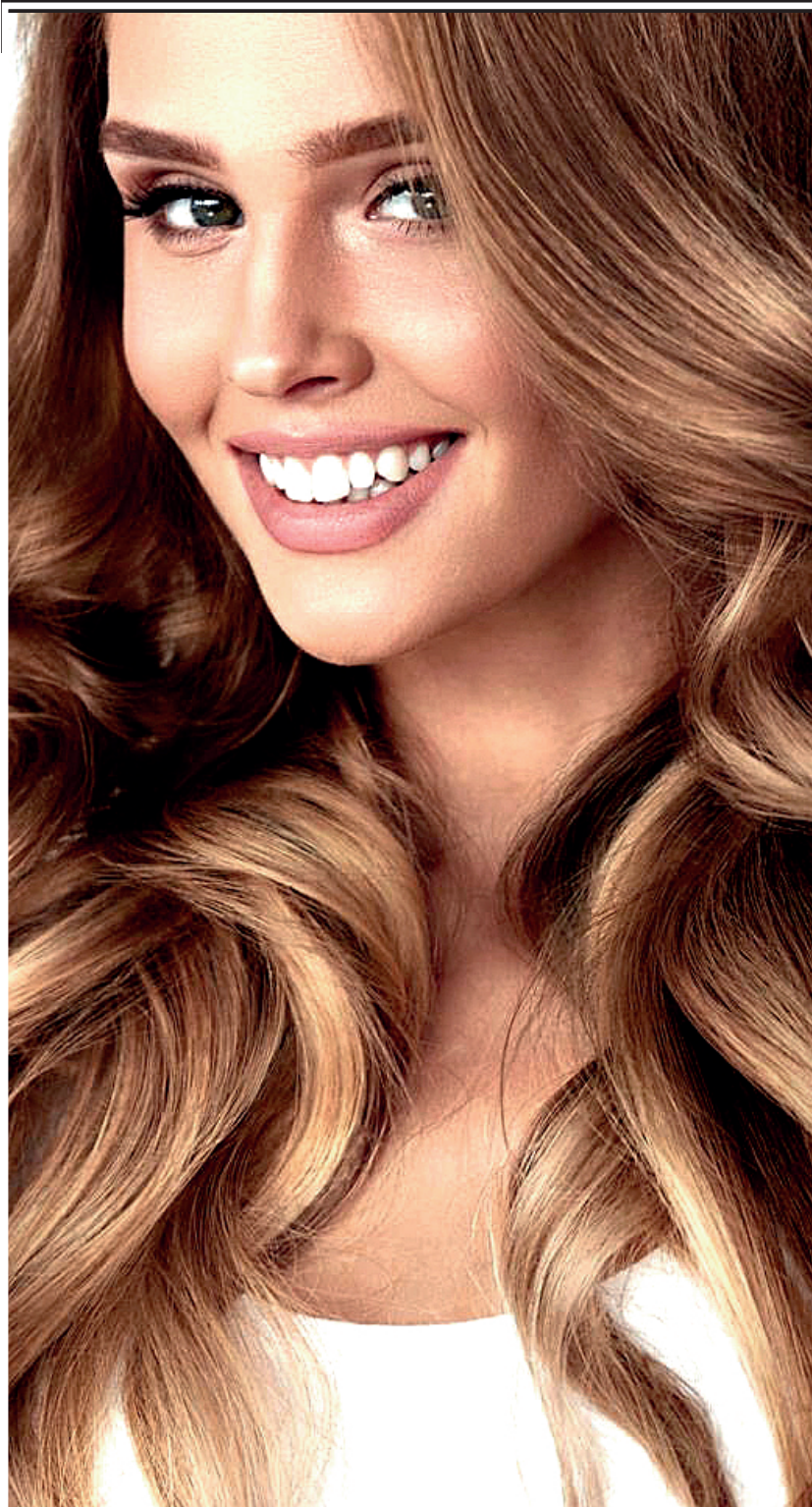


# LISAPLEX

ORGANIC **NATURAL PROTEIN** COMPLEX



**REPAIRS  
THE HAIR  
BONDS**

REVOLUTIONARY  
**EFFECTIVE**  
TECHNOLOGY

**BY LISAP**

SO YOU CAN  
*ALWAYS*  
BE **SURE OF  
PERFECT  
HAIR**

*even when it is*  
COLOURED  
BLEACHED  
STRAIGHTENED  
& CONSTANTLY  
STYLED

**SIMPLE , QUICK , LONG LASTING & EASY**



# SCIENCE ON YOUR SIDE LISAPLEX

## THE SIMPLE FACTS

### 1. CAN LISAPLEX™ BE USED ON HAIR THAT HAS HAD PREVIOUS CHEMICAL TREATMENTS?

Yes, after hair has previously been coloured, bleached/decoloured, straightened or permed, Lisaplex™ can be applied – providing the hair structure is completely intact.

### 2. CAN I CARRY OUT TWO PROCEDURES ON THE SAME DAY WITH LISAPLEX™?

Yes, if the hair structure allows it.

### 3. DO I NEED TO INCREASE PROCESSING TIMES WHEN USING LISAPLEX™ WITH COLOUR & BLEACH ?

No, it's not necessary to change anything you would usually do.

### 4. IS THE LIFTING POWER OF BLEACH/DECOLORANT REDUCED?

No, the ability to lift or lighten is not affected.

### 5. CAN I MIX LISAPLEX™ WITH HAIR COLOURS?

Yes, Lisaplex™ is very effective when used in combination with any colouring procedure.

### 6. IS THERE ANY NEED FOR LISAPLEX™ TO BE MAINTAINED BY CLIENTS AT HOME?

By choosing the Lisaplex™ treatment most appropriate for your client's hair type, there is no need for them to maintain the treatment themselves afterwards.

### 7. ULTIMATE SHAMPOO

Both in the salon and for clients at home Ultimate Shampoo with Hydrolysed Keratin & Ceramide A2 gives best long lasting condition for all hair types after any Lisaplex treatment.

#### SALON COSTS BASED ON A 475ml Kit

	Use	applications per 475ml kit
<b>BondSAVER</b>		
Bleach & De-colour	5ml	95
Colour	3ml	158
Reconstruct	30ml	15
Perm/ Straighten	30ml	15

<b>HairSTRUCTURE FILLER = 2 per kit</b>		
Bleach / De Colour	20ml	47
Colour	15ml	63
Reconstruct	20ml	47
Per/ Straighten	20ml	47

#### AVERAGE SALON COSTS\*

Bleach / De-colour	£2.12
Colour	£1.58
Reconstruct/ Perm / Straighten	£2.12

\* Estimate calculated on average usage - actual cost will vary dependant on hair length &/or personal preferences

## BondSAVER

TO GUARANTEE TOTAL ASSURANCE RELIABILITY  
& FREEDOM FROM DAMAGE.

mix in with  
BLEACH / COLOUR & DECOLOURATION  
products during their Process

and also use for the  
RECONSTRUCTION PROCESS  
prior to applying HAIR Structure Filler

## Hair Structure FILLER

PROVIDES UNIQUE BENEFITS  
when Used after Bleaching De-colouring,  
Colouring Perming, Straightening  
& Reconstruction Treatments





100% Free  
of PARABENS  
SULPHATES  
and FORMALDEHYDE  
**LISAPLEX**

**INTERNALLY  
TREBLES THE STRENGTH  
OF DAMAGED HAIR**

Restoring Natural Anti Breakage properties  
Provides protection from damage caused by styling  
and heated appliances

**EXTERNALLY  
STRENGTHENS & MOISTURISES  
REDUCES DAMAGE**

from aggressive chemical treatments, the  
environment and also daily styling



**STATE OF THE ART FORMULA  
UNIQUE BENEFITS**

**Wheat PROTEINS**

With moisturizing and film-forming properties protecting the hair  
even in extreme conditions.

Deeply penetrate the hair reaching the Inner areas of the  
cortex improving elasticity and strength.

**Organic PROTEINS**

Have strong reinforcing properties. They penetrate inside the hair  
hydrating, increasing elasticity & strengthening the cuticle.

**Oat PROTEINS**

Have unique moisturizing properties that improve the flexibility  
and elasticity of the hair fibre making the hair softer.

**Soy PROTEINS**

Condition & moisturize the hair and give protection  
against the effects of chemical treatments.



● **Transformation to  
beautiful & manageable hair  
RECONSTRUCTION**

**AFTER PERMING / STRAIGHTENING**

WASH THE HAIR WITH ULTIMATE SHAMPOO, RINSE OFF  
& TOWEL DRY

1. Apply 10 - 40ml of BondSaver  
according to hair length

PROCESS FOR 5-10 MINUTES,  
RINSE OFF WITH WARM WATER, THEN TOWEL DRY THE HAIR

2. Apply 20ml of Hair Structure Filler  
to medium to long hair

PROCESS FOR 5 - 10 MINUTES THEN RINSE OFF WITH WARM WATER

● **Increased Quality  
& Protection by adding to**

**PERMANENT, QUASI & TEMPORARY  
COLOUR**

PROCESS COLOUR AS NORMAL

*There is no need to alter the Developer Strength or the Processing time.  
For a root retouch add Lisaplex to the Colour as normal and also  
apply to the untreated hair.*

Mix 3ml of BondSaver  
to every 50ml of Colour

Example - 50ml Colour + 75ml Developer + 3ml of BondSaver

AFTER THE PROCESS RINSE OFF AS NORMAL  
& APPLY A POST COLOUR SHAMPOO, THEN TOWEL DRY THE HAIR

2. Apply 10 - 20ml of Hair Structure Filler  
to medium to long hair

PROCESS FOR 10 MINUTES THEN RINSE OFF WITH WARM WATER

● **Protection & conditioning  
when adding to**

**BLEACHING & DE-COLOURATION**

PROCESS THE BLEACH / DECOLOURANT AS NORMAL

*There is no need to alter the Developer Strength or the Processing time*

1. Mix 5ml of BondSaver

to every 30ml of Bleach / Decolourant

Example - 30ml Bleach/Decolourant + 45ml Developer + 5ml of BondSaver

AFTER THE PROCESS RINSE OFF AS NORMAL  
& APPLY A POST COLOUR SHAMPOO, THEN TOWEL DRY THE HAIR

2. Apply 20ml of Hair Structure Filler  
to medium to long hair

PROCESS FOR 10 MINUTES THEN RINSE OFF WITH WARM WATER



# LISAPLEX

**QUICKLY, SIMPLY  
TRANSFORM**  
your client's hair

NOW YOU ARE A

# HAIR HERO



Create  
**THE HAIR CLIENTS  
HAVE ALWAYS  
DREAMED OF**

EASILY, SUCCESSFULLY IN ONLY AROUND 20 MINUTES

## **NO COMPROMISES - NO CHANGES**

**USE YOUR REGULAR DEVELOPER STRENGTH  
NORMAL PROCESSING TIMES  
& COLOUR SHADES CHOICE**

### 3 CONVENIENT OPTIONS

#### **Salon KIT**

1 x Bond Saver 475ml  
& 2 x Hair Structure Filler 475ml

#### **Stylist KIT**

1 x Bond Saver 125ml  
& 2 x Hair Structure Filler 125ml

#### **NEW**

#### **Single Application KIT**

1 x Bond Saver 50ml  
& 1 x Hair Structure Filler 20ml



SALON  
Kit

STYLIST  
Kit

**NEW**  
SINGLE  
APPLICATION  
Kit



## **LISAPLEX - SAFE & UNCOMPLICATED**

Predictable and best treatment results for the hair



+49 361 7314-745



+49 361 7314-738



[info@hairpure-friseurinkauf.de](mailto:info@hairpure-friseurinkauf.de)



[www.hairpure-friseurinkauf.de](http://www.hairpure-friseurinkauf.de)



Lagerstr. 10, 99086 Erfurt